

SCANLAN® RELIANCE Bulldog Clamps



Actual Size



Highest Quality Surgical Instruments
Since 1921

SCANLAN® Reliance Bulldog Clamps

Reliable, Surgeon-Controlled Vessel Clamps

The SCANLAN® Reliance Bulldog Clamp has been designed to provide secure, robust clamping pressure to assist in the temporary occlusion of vessels. Manufactured with the highest quality stainless steel, its 1 x 2 DeBakey jaws ensure a firm yet atraumatic clamping pressure. A unique suture port allows optional suture tagging to enhance surgical location and recovery.

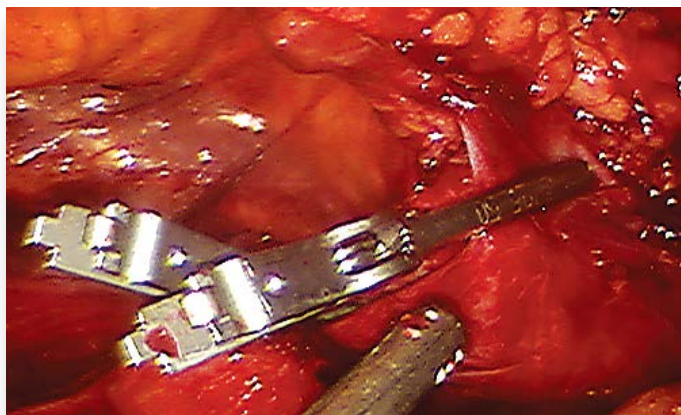
Features Include:

- 1 x 2 DeBakey jaws
- 350 grams closing pressure*
- Suture port
- Highest quality stainless steel
- Reusable / durable
- Low profile design
- Radiopaque

Reliance Bulldog Applier / Introducer

- Custom jaw allows for secure deployment of bulldog into the surgical field
- Designed for use with 12 mm cannula

* Approximate clamping pressure



SCANLAN® Reliance Bulldog Clamps Straight

	Description
3795-52	40 mm Straight DeBakey Jaws 2 3/4" (7 cm)
3795-50	25 mm Straight DeBakey Jaws 2" (5 cm)
3795-56	15 mm Straight DeBakey Jaws 1 5/8" (4 cm)
3795-54	7 mm Straight DeBakey Jaws 1 1/4" (3.2 cm)

SCANLAN® Reliance Bulldog Clamps Curved

	Description
3795-51	25 mm Curved DeBakey Jaws 2" (5 cm)
3795-57	15 mm Curved DeBakey Jaws 1 5/8" (4 cm)

Firm Sale - May Be Available For Evaluation



NEW

SCANLAN® Reliance Bulldog LP Clamp

Setting The Gold Standard For Clamping

The new SCANLAN® Reliance Bulldog LP Clamp is based on the same platform as the current Reliance Bulldog Clamps but features a lower clamping pressure. The Low Pressure bulldog is designed to fit through a variety of introducer ports, making this a great option for use in situations when the patient's anatomy (or chosen surgical technique) is best served with lower pressure clamping. With its new color to differentiate this from other clamps, the SCANLAN® Reliance Bulldog LP Clamp sets the "gold standard" for effective clamping.

Reliance Bulldog LP Features

- **Lower Clamping Pressure** - provides approximately 205 grams of clamping pressure in initial use
- **Expands Clamping Options** for certain patients, techniques and anatomy
- **Multiple Application Methods** - including Scanlan Applier / Introducer
- **Optimized Dimensions** - length/height fits through commonly used ports and can be used with multiple instruments in the same port
- **18 mm Jaw Length** - versatile, workhorse size
- **Visually Differentiated** - gold color stands out from other Reliance Bulldog clamps
- **DeBakey Style Jaws** - provides firm, atraumatic occlusion

SCANLAN®

Reliance Bulldog LP Clamp

Actual Size	Description	Total Length
3795-44 NEW 	18 mm Straight Light Pressure DeBakey Jaws	1.75" (4.4 cm)

PLEASE NOTE:
Not available in the European Union or Australia.
All products are not available in all regions. Please contact Scanlan customer service for product availability in your region.

For Temporary Occlusion Only. Not Intended for Implantation.
Firm Sale - May Be Available For Evaluation

SCANLAN® Reliance Bulldog Applier / Introducer

	Shaft	Working Length	Total Length
9009-395 	8 mm	13 3/4" (35 cm)	17 1/3" (44 cm)
9009-393 	8 mm	5" (12.7 cm)	9" (23 cm)



SCANLAN® Reliance Bulldog Clamps

Reliable, Surgeon-Controlled Vessel Clamps



2133-03



2135-03

SCANLAN®

Recommended Reliance Bulldog Starter Pack

Recommended	QTY	Cat. No.	Description	Total Length
SCANLAN® V.I.P.™ Sterilization Tray	Choose 1	2133-03	SCANLAN® V.I.P.™ Micro Sterilization Tray With Scan-Guard™ Silicone Mat - Includes Hardware (Holds 3-4 Clamps)	1.5" x 3.5" x 1" (3.81 cm x 8.89 cm x 2.54 cm)
		2135-03	SCANLAN® V.I.P.™ Reliance Bulldog Sterilization Tray With Scan-Guard™ Silicone Mat (Holds 8-10 Clamps)	8 1/4" x 3 1/4" x 1 1/2" (21 cm x 8.3 cm x 3.8 cm)
Applier/Introducer	Choose 1	9009-393	Straight Jaws With Ratchet	9" (23 cm)
		9009-395		17 1/3" (44.5 cm)
SCANLAN® Reliance Bulldog Clamps	Up To 4 Of Any Combination	3795-52	40 mm Straight DeBakey Jaws	2 3/4" (7 cm)
		3795-50	25 mm Straight DeBakey Jaws	2" (5 cm)
		3795-56	15 mm Straight DeBakey Jaws	1 5/8" (4 cm)
		3795-54	7 mm Straight DeBakey Jaws	1 1/4" (3.2 cm)
		3795-51	25 mm Curved DeBakey Jaws	2" (5 cm)
		3795-57	15 mm Curved DeBakey Jaws	1 5/8" (4 cm)

Firm Sale - May Be Available For Evaluation

For more information or to place an order, please contact your local Scanlan representative, or call...

U.S. & Canada: 800-328-9458
 International: 651-298-0997
 FAX: 651-298-0018
www.scanlaninternational.com



MK-B-RBDC Rev. H